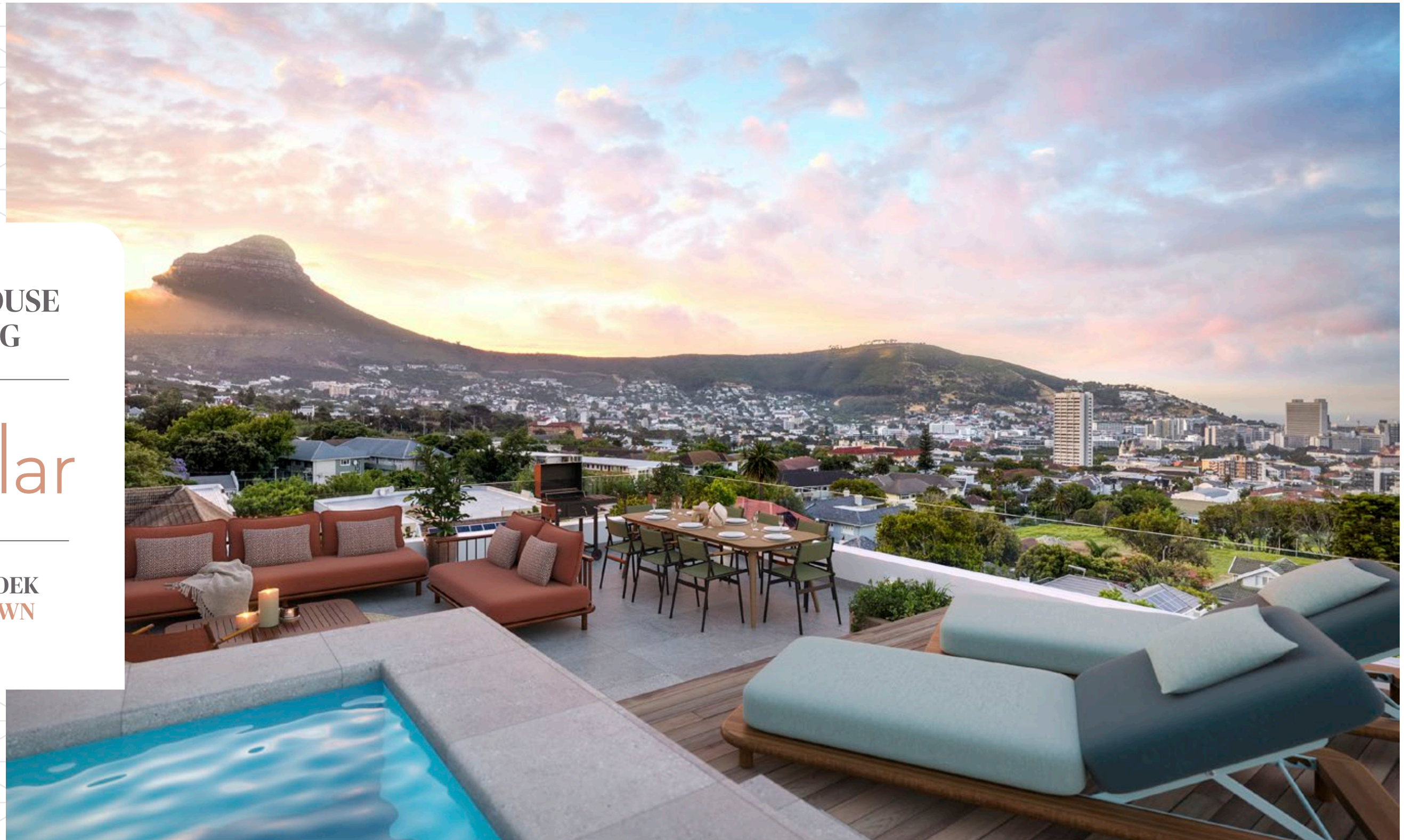


**PENTHOUSE
LIVING**

the
poplar

**VREDEHOEK
CAPE TOWN**



**HORIZON
CAPITAL** | RESIDENTIAL

CONSCIOUS LIVING



Nature on
your doorstep

**HORIZON
CAPITAL
RESIDENTIAL
CREATES
SPACES FOR
CONSCIOUS
LIVING**



Conscious.
Mindful.
Aware.

Conscious developments for conscious living

Horizon Capital Residential is a boutique property development firm based in Cape Town. We design and develop high-quality residential buildings that meet the practical needs of future owners, while respecting the local context. All our buildings are built with sustainability in mind.

We call this conscious development. We design with mindful intent and develop responsibly.

Our buildings reflect our commitment to you, to the community and to the environment.

Our responsibility to our buyers means that we create spaces that suit your lifestyle.

Central locations. Integrated facilities.
Secure access. Beautiful finishes.

Our responsibility to the neighbourhood means that we celebrate the unique quality and character of the local area. We act with professionalism and integrity, actively promoting and supporting the communities where we develop.

Our responsibility to the environment means that we design for sustainability. Our buildings make it easy for residents to recycle waste, save electricity and minimise their environmental impact.

We create conscious developments for conscious living. We create for you.

Luxury
lifestyles lived
responsibly

Penthouse living at its luxurious best

Welcome to The Poplar, Horizon Capital Residential's newest boutique apartment block, featuring our signature marks of contemporary design, timeless quality, and environmental consciousness – with spectacular, all-round views as a unique finishing touch. The Poplar is designed to be the epitome of exclusive living. Here, you'll find the penthouse lifestyle you want, at all levels, surrounded by everything you need.

Every aspect of The Poplar's design exudes luxury and contemporary elegance, with high-end finishes to complement the building's art-deco heritage. What's more, regardless of which apartment you make your own, one thing is guaranteed: you'll enjoy the best of the City from every side of the building. The Poplar has been oriented and designed so that every unit has a breathtaking view, thanks to floor-to-ceiling windows which flood the spaces with natural light and maximise the spectacular vista of some of Cape Town's most iconic locations. This is penthouse living for everyone.

One- and two-bedroom apartments look towards Table Mountain to the south, Lion's Head and Signal Hill towards the west and the City to the north, east and beyond. The most spectacular feature of The Poplar are the three penthouse apartments at the top. Each has its own rooftop swimming pool, ideal for soaking up the sun on hot summer days and cooling down on warm sultry nights. While every unit is appointed to contemporary standards, the penthouses are the most luxurious, with Oggie floors and other high-end features throughout.

Located at the foot of Table Mountain, in Vredehoek, one of Cape Town's most popular suburbs, The Poplar is your connection point between the vibrancy of urban city life and the majesty of the natural environment. Vredehoek is a neighbourhood full of character, much-loved places to meet and greet, and a stone's throw away from shopping, leisure and business amenities.

Live the high life. Indulge in penthouse living at The Poplar.





The perfect
location for living,
11 Davenport Road
Vredehoek
Cape Town

THE POPLAR AT A GLANCE



14 Exclusive Apartments

- Panoramic views of Table Mountain, City & Sea
- Secure parking, CCTV, access control & electric fencing
- Fibre internet connectivity
- Lift access to apartments
- Pet & short-term letting friendly
- Back-up power
- Water-efficient fittings
- Low-voltage LED fittings
- Floor-to-ceiling aluminium and glass sliding doors



Apartment Mix

- 1 one-bedroom garden apartment 81m²
- 4 one-bedroom apartments 38m² – 46m² including a terrace
- 6 two-bedroom apartments 67m² – 74m² including a terrace
- 3 exclusive penthouses 132m² – 165m² including terraces



Perfect Location

- 180m to Courage Coffee Mobile Bar
- 850m to Gardens Shopping Centre
- 450m to Herzlia Schools
- 450m to Deer Park Café & Deli
- 950m to De Waal Park
- 1.7km to Kloof Street
- 3.8km to Lion's Head
- 3.8km to V&A Waterfront
- 6.5km to Camps Bay Beach



Penthouses

- Oggie oak flooring
- Air-conditioning
- Exclusive rooftop pool terraces with exceptional views
- Integrated appliances
- Heated towel rail to en-suite

PENTHOUSE 501



Timeless quality with
sustainability in mind

PENTHOUSE 501 ROOFTOP LIVING

Contemporary design,
spectacular views



PENTHOUSE 501 ROOFTOP LIVING

Rooftop views of
iconic locations



PENTHOUSE 402 LIVING



—
The
penthouse
lifestyle
you want

PENTHOUSE 401 ROOFTOP VIEWS





Conscious design
for urban living

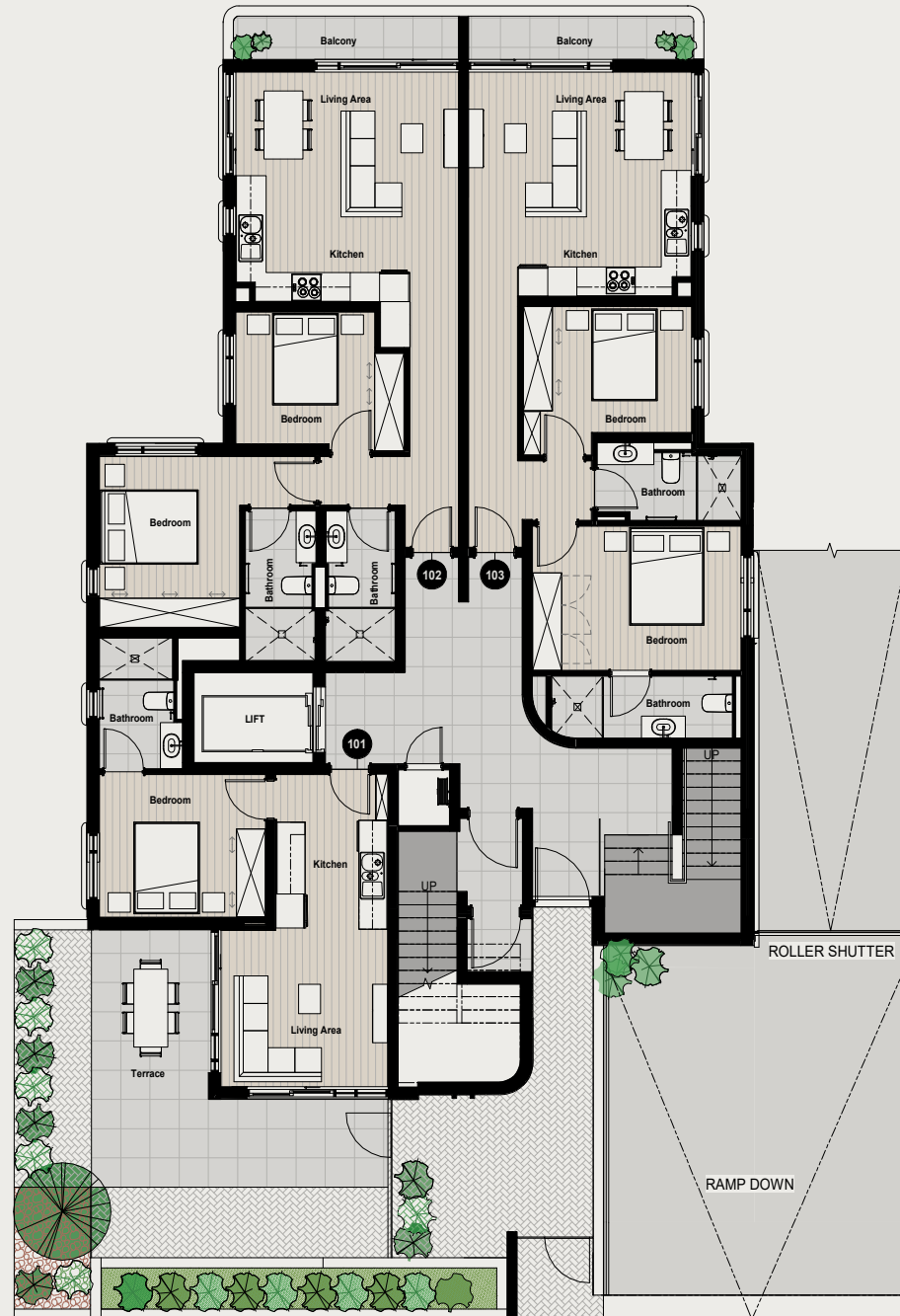
FLOOR PLAN DETAILS

First Floor

 Click to view price list



CITY VIEWS



DAVENPORT ROAD / TABLE MOUNTAIN VIEWS

101:	INTERIOR:	37M ²
	TERRACE:	9M ²
	GARDEN:	35M ²
	TOTAL:	81M ²
102:	INTERIOR:	67M ²
	TERRACE:	6M ²
	TOTAL:	73M ²
103:	INTERIOR:	68M ²
	TERRACE:	6M ²
	TOTAL:	74M ²



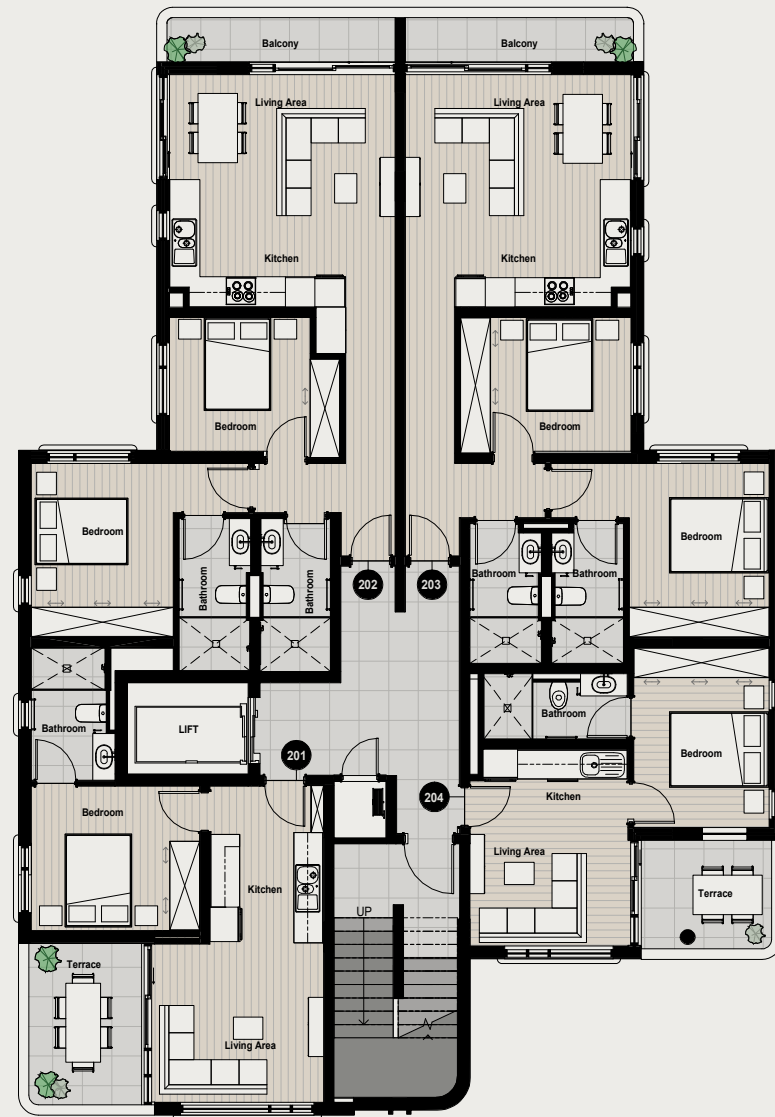
EAST ELEVATION

Second Floor

Click to view price list



CITY VIEWS



DAVENPORT ROAD / TABLE MOUNTAIN VIEWS

201:	INTERIOR:	37M ²
	TERRACE:	9M ²
	TOTAL:	46M ²
202:	INTERIOR:	66M ²
	TERRACE:	6M ²
	TOTAL:	72M ²
203:	INTERIOR:	66M ²
	TERRACE:	6M ²
	TOTAL:	72M ²
204:	INTERIOR:	31M ²
	TERRACE:	7M ²
	TOTAL:	38M ²



WEST ELEVATION

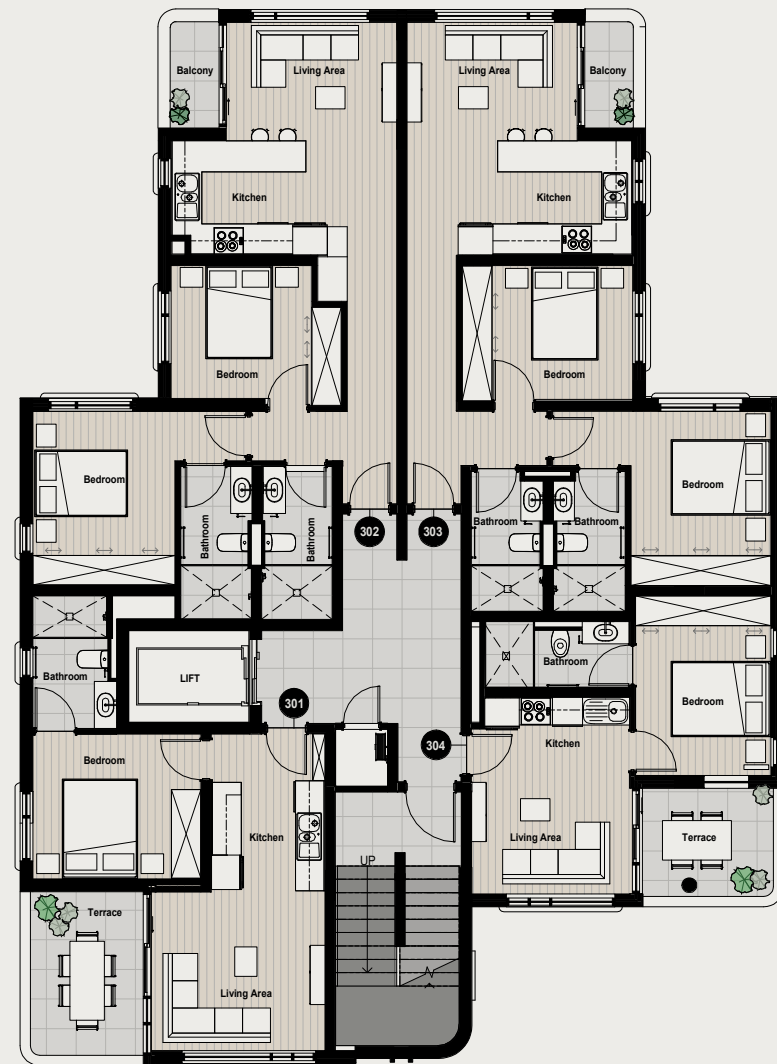
FLOOR PLAN DETAILS

Third Floor

Click to view price list

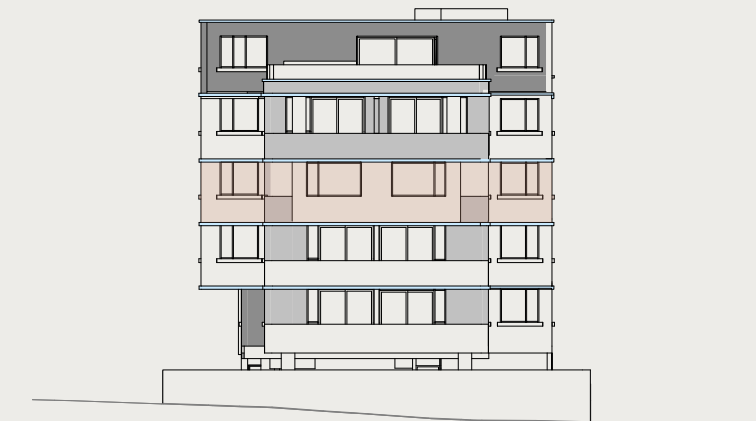


CITY VIEWS

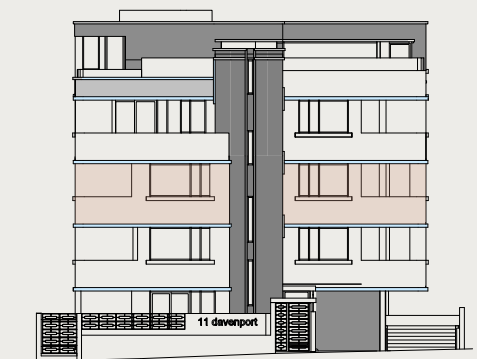


DAVENPORT ROAD / TABLE MOUNTAIN VIEWS

301:	INTERIOR:	37M ²
	TERRACE:	9M ²
	TOTAL:	46M ²
302:	INTERIOR:	64M ²
	TERRACE:	3M ²
	TOTAL:	67M ²
303:	INTERIOR:	63M ²
	TERRACE:	3M ²
	TOTAL:	66M ²
304:	INTERIOR:	31M ²
	TERRACE:	7M ²
	TOTAL:	38M ²



NORTH ELEVATION

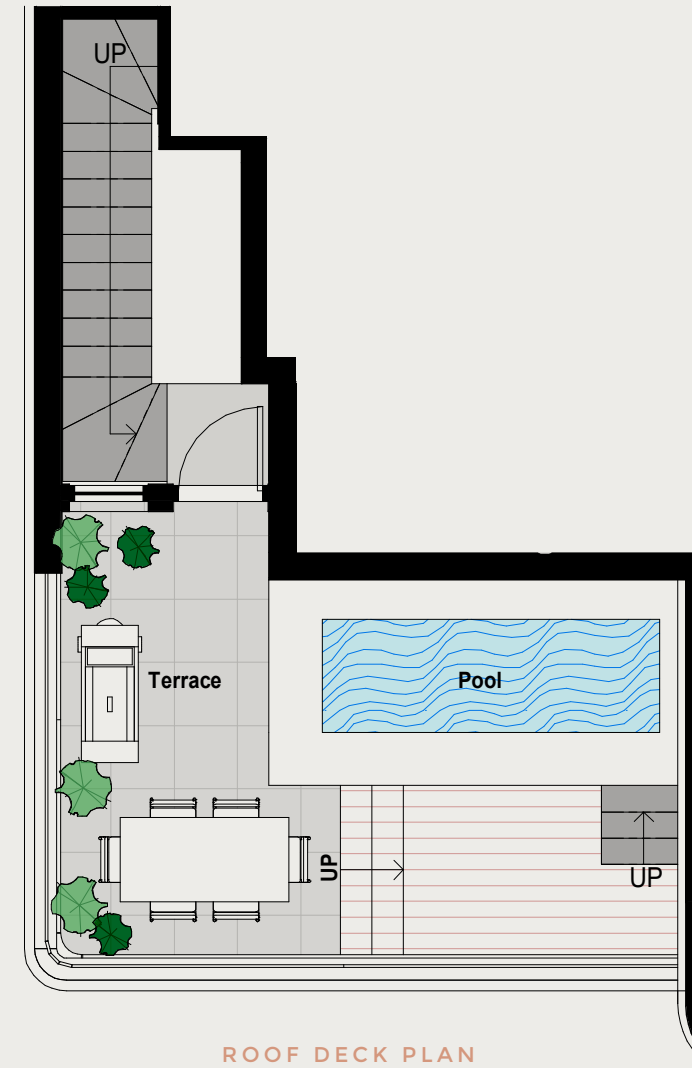
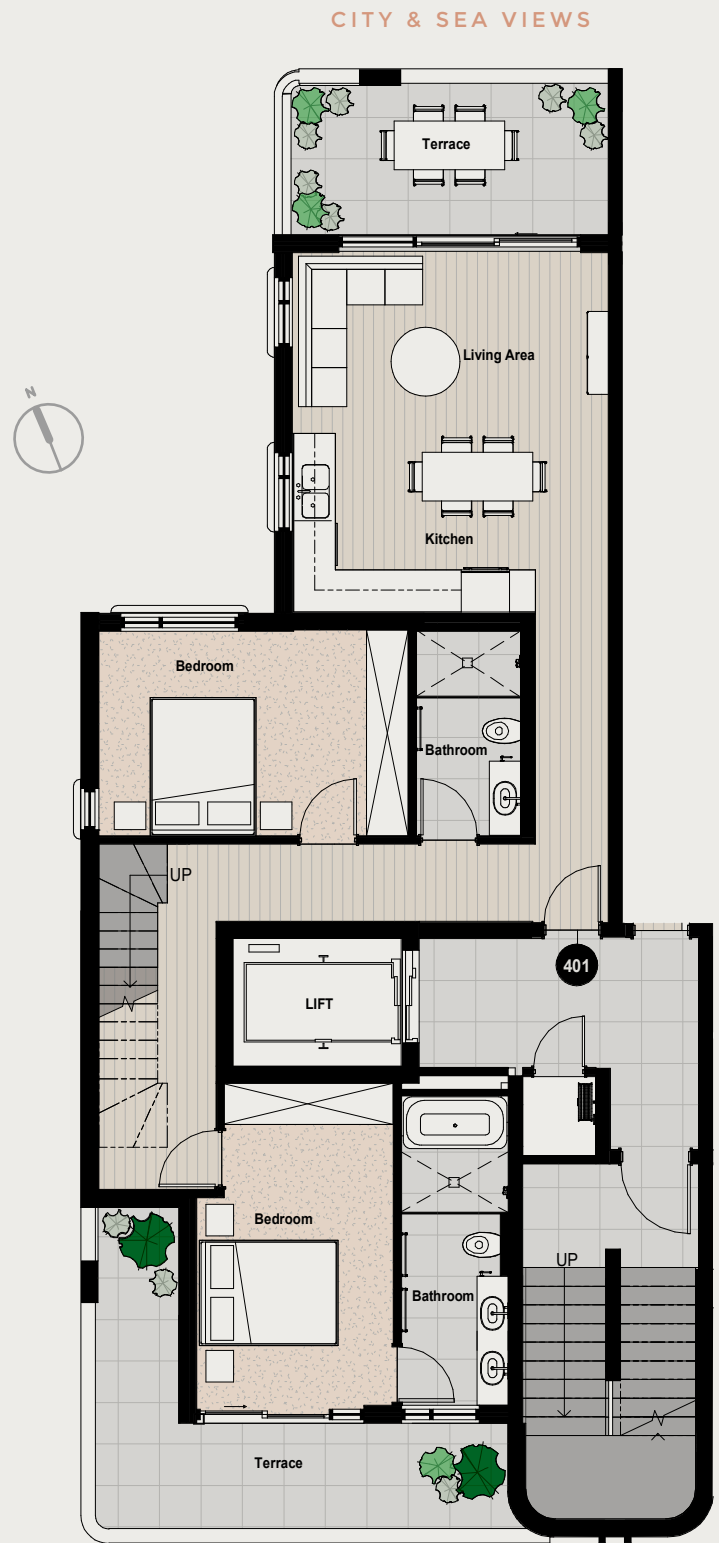


SOUTH ELEVATION

FLOOR PLAN DETAILS

Fourth Floor
401
Penthouse


 Click to view price list

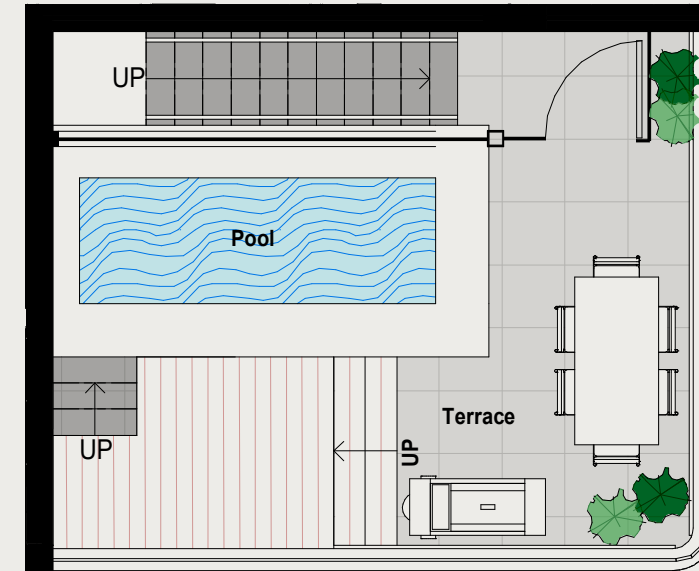
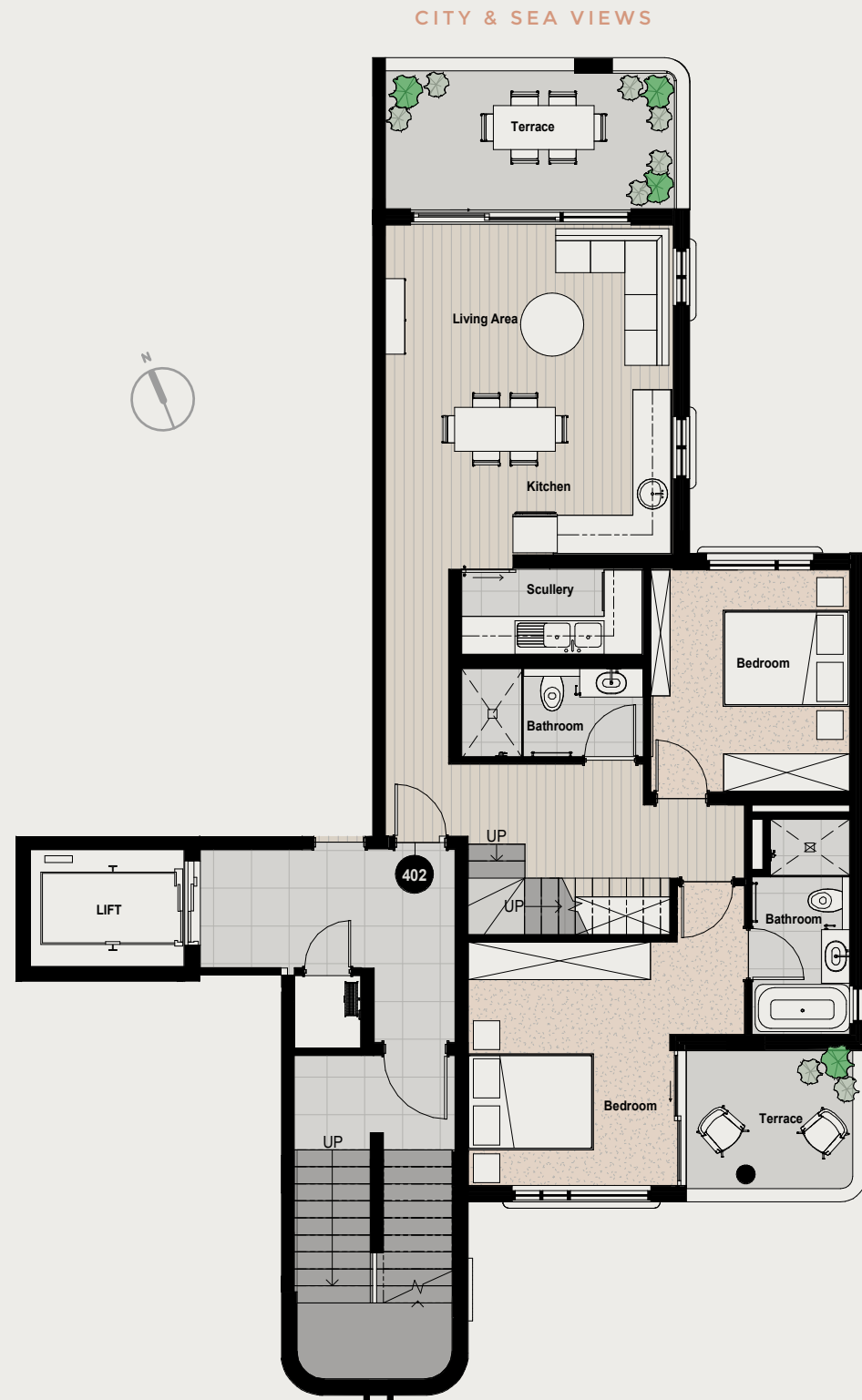


401: INTERIOR:	90M ²
TERRACE:	26M ²
ROOFTOP POOL DECK:	25M ²
TOTAL:	141M ²

FLOOR PLAN DETAILS

Fourth Floor
402
Penthouse

 Click to view price list



402: INTERIOR:	90M ²
TERRACE:	17M ²
ROOFTOP POOL DECK:	25M ²
TOTAL:	132M ²

FLOOR PLAN DETAILS

**Fifth Floor
501 Penthouse**

 Click to view price list

CITY & SEA VIEWS



UNIT FLOOR PLAN

501: INTERIOR:
TERRACE:
TOTAL:

90M²
75M²
165M²

THE POPLAR OPPORTUNITY



Conscious design. For the neighbourhood. For you.

Fall in love with Vredehoek.

Vredehoek has everything you need to live the lifestyle you want. It's more than a suburb – it's one of Cape Town's most loved neighbourhoods, with a community of vibrant people who love to live here.

From your place at The Poplar, you'll see panoramic vistas towards Cape Town's favourite destinations like Table Mountain, Lion's Head and Signal Hill, the City and the harbour.

Take a short walk to meet friends at neighbourhood cafés serving freshly brewed coffee and delicious food. Local grocery stores are open from early to late. Look after your body, mind and soul at yoga studios, beauty salons, doctor's rooms and more. Take a breather in the parks and forests just up the road.

Wake up with the sun rising over the city. Stretch out on your terrace and see the world starting up around you. Work from home or head to the

office on foot, by bike or by bus. Wind down at the end of the day with a walk or ride on the mountain. At night, connect with friends or stay in, surrounded by luxury, as darkness falls and the city lights shimmer across the landscape below.

Poplar. A unique investment for you.

The Poplar comprises 14 apartments, designed for luxury living, consciously.

Sustainability features help you manage energy consumption more responsibly. CCTV and secure access give you peace of mind. Beautiful, high-end finishes demonstrate contemporary design flare with art-deco touches.

Every apartment offers spectacular views over mountains and city. These views are protected, guaranteeing your line

of sight towards the icons that make up Cape Town's picture postcard every day.

What's more, if you're looking for exclusivity, luxury and the lifestyle you want, the three penthouses have it all, with private swimming pools and unobstructed views that cascade from your rooftop sanctuary.

The penthouse lifestyle is waiting for you, at The Poplar.

IT ALL HAPPENS HERE



- 01 Courage Coffee Mobile Bar
- 02 Ou Meul
- 03 Deer Park
- 04 De Waal Park
- 05 Table Mountain National Park
- 06 Lion's Head
- 07 Signal Hill
- 08 V&A Waterfront
- 09 Oranjezicht City Farm Market
- 10 Camps Bay Beach
- 11 Sea Point Promenade
- 12 Clifton Beaches
- 13 The Lawns at the Roundhouse Restaurant
- 15 Nourish'd, Liquorice and Lime, Lifestyle on Kloof Shopping Centre
- 16 Gardens Shopping Centre
- 17 Virgin Active Health Club (Wembley Square)
- 18 The Labia Theatre
- 19 St Cyprian's School
- 20 Herzlia School



Disclaimer
 Please note that images, renders, perspectives, plans and finishes shown are impressions only and remain subject to change at the developer's discretion. The developer cannot be held liable for any changes made. This material has been prepared for informational and marketing purposes only. Horizon Capital (Pty) Ltd. holds a Fidelity Fund Certificate in its capacity as a business property practitioner, is registered with the PPRA, and operates a Trust Account.

PENTHOUSE
LIVING

the
poplar

VREDEHOEK
CAPE TOWN



HORIZON
CAPITAL

RESIDENTIAL

www.thepoplar.capetown
sales@horizoncapital.co.za
+27 21 425 8586

David 072 385 4386
Tamsyn 082 535 5457
Devin 072 340 1323